



THE BANGKOK DOCK COMPANY

A STATE-OWNED ENTERPRISE

UNDER THE OVERSIGHT OF THE MINISTRY OF DEFENCE BY THAI ROYAL NAVY



“To be a dockyard with international standards and an effective key player in sustainable development of Thai Defense/Maritime Industry”



PRINCIPLE OF MORALITY

BANGKOK DOCK COMPANY ADHERE TO VIRTUE AND ETHICS





โรงซ่อมรถยนต์ที่อู่บางกอกค็อก (ภาพจากหนังสือกรุงเทพฯ ในอดีต)

THE BANGKOK RECORDER.
 March 1st 1865.
 หน้า ๑๕

แสดงหนังสือพิมพ์ฉบับแรกเมืองไทย ชื่อ THE BANGKOK
 หรือ หนังสือจดหมายเหตุ
 วางจำหน่ายครั้งแรก เมื่อวันที่ 4 กรกฎาคม พ.
 แต่เริ่มมีการโฆษณาครั้งแรกเมื่อวันที่ 1 มีนาคม พ.ศ. 2408

"Bangkok Dock Co."
 อู่เรือบางกอกค็อก

156 years Bangkok Dock

1865 Bangkok Dock Company, (1957) Limited, formerly known as "Bangkok Dock Co." was established by an Englishman named Captain Bush (SIR JOHN BUSH K.C.W.E) or. Phya Visootsakorndit (The 1st General Director of Marine Department)

1941 Cause of the WWII (Pacific War) made the workshop area and the neighbors Building was bomb-damaged and Japanese troops seized and controlled until the war ended. The Royal Thai Navy agreed that Thailand should take control of this dry dock and join operation ever since.

1957 The Royal Thai Navy acquired all the shares of the new company and changed its name from Bangkok Dock Co., The Bangkok Dock Company, (1957) Limited.



Captain Bush
 (SIR JOHN BUSH K.C.W.E)



VADM. Phra-Viji-Navy (RTN)
 1st MD of The Bangkok Dock



The Bangkok Dock Company



Organization	: State Owned Enterprise as Company Limited
Major Share Holder	: Ministry of Finance (100 %)
Controlled By	: Ministry of Defence / Royal Thai Navy
Capital Register	: 100 MB
Company Asset	: 4,000 MB
Core Business	: Ship building / ship repairing / Defense Industry
Number of Staffs	: 150 Permanent Staff
Location	: Bangkok (Head Office) : Chonburi (Branch Office)



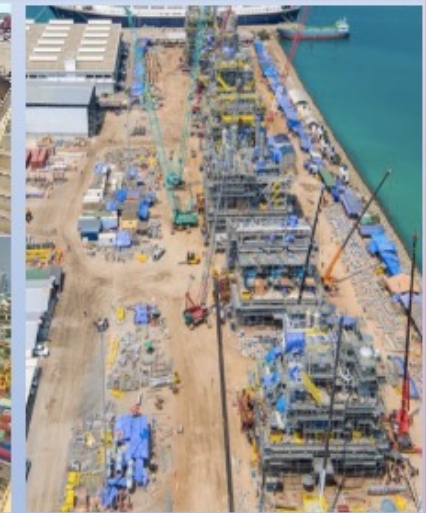
The Bangkok Dock Company

VISION

“To be a dockyard with international standards and an effective key player in sustainable development of Thai Defense/Maritime Industry”

MISSION

- Shipyard operations
- Shipbuilding and repairing including mechanical maintenance
- Maritime Industry
- Building and assembling large steel structures
- Commercial support for defense industry of Ministry of Defense
- A distributor of security and defense technology to government agencies and the private sectors



The Bangkok Dock Company Board of Directors



ADM TALERNGSAK SIRISAWAT
CHIEF OF STAFF(COS), RTN
Chairman



VADM WIROJ NINLAPONG
DIR GEN, DOCKYARD, RTN
Deputy Chairman



**VADM SURANUN
SAENGRATTANAKUL**
DEPUTY COS, RTN
Director



VADM SONGRIT CHAT-NGERN
DIR GEN, NAVAL FINANCE
Director



RADM THANAKORN JANGJIT
DIR, MAHIDOL ADULYADEJ NAVAL
DOCKYARD,
Director



**GEN ADINAN
CHAIYAREK**
MOD Representative
Director



**POL LT SARUNKORN
LERTOPAS**
MOF Representative
Director



MR CHANIS KHLAISANG
Independent Director
Law Specialist



**MR YODSAPON
JUNSOOKSRI**
Independent Director
Financial Specialist



**MR NOPPADOL
WANICHWORANANT**
Independent Director
IT Specialist



**LCDR CHAIRACH
ARMATHESA**
Director
MD Bangkok Dock



Our Facilities in Bangkok(Head Office)

- The Bangkok Dock head office is located in the central business district(CBD) area of Bangkok.
- The yard area is 33,000 m² adjacent to the main river of Thailand (Chao Phraya River) and consists of 2 Dry Docks

Dock No.1 Characteristics

Type of Dry Dock	Graving dock
Length	103 Meters
Width	14 Meters
Depth	7.5 Meters

Dock No.2 Characteristics

Type of Dry Dock	Graving dock
Length	115 Meters
Width	16 Meters
Depth	7.9 Meters





Our Facilities in Sattahip Chonburi

- The Bangkok Dock branch office located in Mahidol Adulyadej Naval Dockyard (Belong to RTN) ,Sattahip ,Chonburi.
- Sattahip is the part of EEC Development Project(Mega Project of Thailand). The Dock is perfectly located in a prime area for the maritime industry and situated at next to the open sea , within short commuting distance of Bangkok. It is directly connected to the major expressways Bangkok-Chonburi, close to UTAPAO International Airport.
- BDC get permission from RTN the to use the Drydock and Facilities to support/combine the capability of service



Eastern Economic Corridor Development Project (EEC)



U-Tapao International Airport



The High-Speed Railway Airport Link system



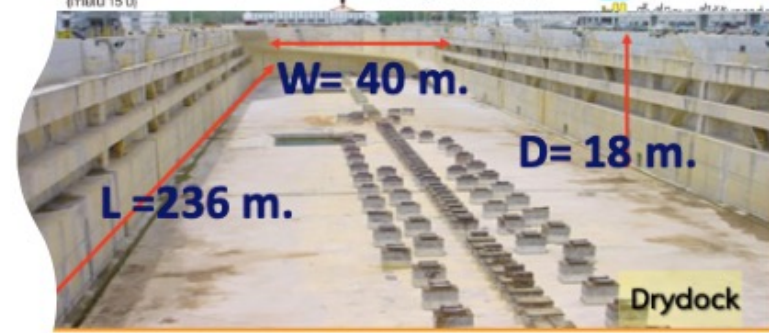
Sattahip Commercial Port

this port can facilitate world-class modern cruise ships. It also supports a successful shipbuilding and oil rig assembly industry.



The double-track rail lines

<u>Dock Characteristics</u>	
Type of Dry Dock	Graving dock
Length	236 Meters
Width	40 Meters
Depth	18 Meters





Our Service - Ship Repairing



The Bangkok Dock Provides the best ship repair & maintenance services to various customers segment such as Royal Thai Navy , government agencies and the private sector



ROYAL THAI NAVY



ROYAL THAI ARMY



PORT AUTHORITY OF THAILAND



THAI CUSTOM DEPARTMENT



MARINE DEPARTMENT



Sea Pearl Super Yacht



Our Successful stories in Ship Building



The Bangkok Dock ship building skill is based on experience and knowledge gained from the past to the present as below details

2013/OPV



2014/OIL TANKER



2019/OPV



Growing step by step in ship building

1989/LST



1980/MINE SWEEPER SUPPORT



1979/BUOY TENDER





One of the successful well know Ship Building Project The 1st Offshore Patrol Vessel, HTMS Krabi



BDC has delivered the first 100% domestically constructed OPV “HTMS Krabi” to the Royal Thai Navy in 2013. This project was considered as a major achievement for BDC, given the complexities of building a Naval Ship and the transfer of technology from BAE System PCL to Thailand.



HTMS Krabi

General characteristics

- Name: HTMS Krabi
- Launched: 3 December 2011
- Commissioned: 26 August 2013
- Class and type: Modified River-class patrol vessel
- Displacement: 1,960
- Length: 90.5 m
- Beam: 13.5m
- Propulsion: 2 X MAN 16128/33D diesel engines, 14,700kw/10,950HP, 2 shafts 2 x controllable-pitch propellers
- Speed: 25 kn (46 km/h)
- Range: 5,500 nmi (10,200 km)
- Endurance: 35 days



Build on our success to the 2nd Offshore Patrol Vessel, HTMS Prachuap Khiri Khan

BDC was awarded the 2nd 90-meter Offshore Patrol Vessel (OPV) contract from the Royal Thai Navy in 2015. The ship is HTMS Krabi sister ship and named “HTMS Prachuap Kiri Khan”. The second offshore patrol vessel would be developed from the design of the first OPV, which was based on a design by BAE Systems



General characteristics

- Name: HTMS Prachuap Khiri Khan
- Launched: 2 August 2019
- Class and type: Modified River-class patrol vessel
- Displacement: 1,960
- Length: 90.5 m (296 ft 11 in)
- Beam: 13.5m (44 ft 3 in)
- Propulsion: 2 X MAN 16128/33D diesel engines, 14,700kw/10,950HP, 2 shafts 2 x controllable-pitch propellers
- Speed: 25 kn (46 km/h)
- Range: 3,500 nmi
- Endurance: 35 days
- Crew : 115



THE BANGKOK DOCK COMPANY

A STATE-OWNED ENTERPRISE

UNDER THE OVERSIGHT OF THE MINISTRY OF DEFENCE BY THAI ROYAL NAVY



Thank you



PRINCIPLE OF MORALITY

BANGKOK DOCK COMPANY ADHERE TO VIRTUE AND ETHICS



www.bangkokdock.co.th